

# 4ML DIESEL INJECTOR



This instrument has been specifically designed for administration of Diesel. Other chemical formulations may not be compatible with some components.

The manufacturer will accept no responsibility for the consequences should this unit be used to administer any product other than Diesel.

## INSTRUCTIONS FOR USE

1. Connect the feed tube to the inlet fitting and to the container. Wind the feed tube springs in an anti-clock-wise direction over the feed tube at these points. This will hold the feed tube in position and prevent it kinking.
2. **ADJUSTING THE DOSE:** There are three dose settings on the gun, 1 ml, 2ml and 4 ml. Select the appropriate dose by rotating the dose selection ring in either direction until the required dose (in mls) is showing at the top of the gun.
3. **PRIMING THE GUN:** To prime the gun, select the 4ml dose, point the nozzle vertically upwards, and begin priming by squeezing the trigger until liquid appears in the chamber. Carefully squeeze the trigger once more to expel air from the chamber.



Care must be taken to ensure the liquid does not come into contact with any part of the operators body. Chemicals may cause injury to the operator.

## CARE AND MAINTENANCE

To ensure continued high performance from this instrument, attention to cleanliness is essential. After each use, flush the instrument and feed tube thoroughly by pumping through a warm detergent mix, followed by clean water. Remove the feed tube from the instrument and suck a small quantity of NJ Phillips Lubricant, into the cylinder by immersing the inlet fitting in the Lubricant, and gently pumping the lever. If at any time the instrument should become sluggish in operation, cleaning and lubrication should overcome this.

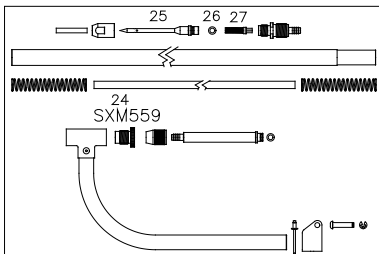
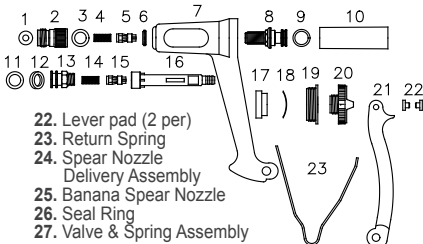


The gun can only be primed at the 4ml dose setting.



DO NOT store your applicator or feed tube full of product. Clean as per the "Care and Maintenance" instructions.

1. Front Delivery Cage Washer
2. Adaptor Spray Head Assembly
3. Delivery Cage Seal Ring
4. Delivery Valve Spring
5. Delivery Valve
6. Delivery Cage Lock Nut
7. Handle
8. Delivery Cage
9. Piston Seal Ring
10. Cylinder
11. Seal Ring
12. Lubricating Washer
13. Piston, Inlet Valve Spring
14. Inlet Valve Spring
15. Pushrod Valve
16. Pushrod
17. Dose Adjustor Lock Ring
18. Dose Adjustor Washer Spring
19. Body Plug
20. Dose Adjustor
21. Lever
22. Lever pad (2 per)
23. Return Spring
24. Spear Nozzle Delivery Assembly
25. Banana Spear Nozzle
26. Seal Ring
27. Valve & Spring Assembly



## PLEASE ORDER BY KIT AND PART NAME. SPARE PARTS AVAILABLE:

KIT No.	PART NAME	INCLUDES ILLUSTRATION No.
WX1576	Major Kit (Hand Piece)	1,3,4,5,9,10,11,14,15.
WX482	Dose Adjustor Assembly	17,18,19,20.
WX1567	Spear Kit	25,26,27.

NJ PHILLIPS PTY LTD ABN 36 000 082 002  
 ADDRESS: LOCKED BAG 8, GOSFORD, NSW  
 2250 AUSTRALIA TELEPHONE: +61 2 4340 2044  
 FAX: +61 2 4340 1991 EMAIL: njp1@njphillips.com.au  
 MADE IN AUSTRALIA



phillipsgreen.com

Our expertise is in your hands.

AS OUR POLICY IS ONE OF CONTINUOUS IMPROVEMENT THE MANUFACTURER RESERVES THE RIGHT TO ALTER THESE SPECIFICATIONS AT ANY TIME. ALL PRODUCTS PRODUCED BY NJ PHILLIPS PTY LIMITED, ARE IDENTIFIED BY A UNIQUE BATCH NUMBER. THIS IDENTIFICATION NUMBER IS AFFIXED TO THE PRODUCT TO ALLOW TRACEABILITY BY THE MANUFACTURER AND MUST NOT BE REMOVED IF PRODUCT INTEGRITY IS TO BE MAINTAINED.  
 PM1165 | QL671